

Boling Independent School District

B  **ND2024**

Board Briefing

December 10, 2024

SCHEDULE

- ✓ • 7/30/2024 – Boling ISD Admin Overview Discussion
- ✓ • 7/31/2024 – CMAR Proposal Opening
- ✓ • 8/12/2024 – CMAR Ranking – Board Recommendation
- ✓ • 8/15/2024 – Internal Kick-off/Staffing
- ✓ • 8/20/2024 – Board Meeting – Parkhill Project Roadmap & CMAR Selection
- ✓ • 8/22/2024 – District Leadership Design Meeting Establish Ground Rules – Red/Green Dot Exercise
- ✓ • 8/29/2024 – Parkhill Charette
- ✓ • 9/12/2024) - District Leadership Design Meeting #2
- ✓ • 9/19/2024 –Grade Level and Department Champions Meeting – Parkhill & Consultants
- ✓ • 10/15/2024 – Parkhill Design Refinement Meeting
- ✓ • 11/4/2024 – Area Campus Tours & Design Review
- ✓ • 11/12/2024 – Board Briefing
- ✓ • **12/6/2024** - SD Final – Delivered to District/CMAR
 - **12/10/2024 - Board Meeting**
 - **12/20/2024 SD Pricing (CMAR)**
- **2/7/2025** – DD final
 - 2/11/2025 - Board Meeting
 - 2/28/2025 – DD Pricing (CMAR)
- **3/28/2025** – CD Final
 - 4/8/2025 – Board Meeting
 - 04/9/2025 – Advert #1
 - 04/16/2025 – Advert #2
- **5/1/2025** – Bid (Confirm w/ CMAR)
- **5/1/2025 – 5/12/2025** – Reconcile GMP (Confirm w/ CMAR)
- **5/13/2025** - GMP to Board
- **5/19/2025** – Notice To Proceed (Construction Starts)
- **7/31/2026** – Best Case Substantial Completion (CMAR to confirm)
- **12/2026** – Worst Case Substantial Completion



NEWGULE ELEMENTARY

Parkhill

SD SET Details

SD Set includes preliminary drawings for the following disciplines:

- Civil – 1 sheet - Overall site plan
- Landscape – 4 sheets – 2 concepts
- Architectural – 7 sheets - Floor plans, elevations
- Interiors – 2 sheets – Interior Design Summary, Interior Finish Summary
- Kitchen – 4 sheets – Kitchen Equipment Plan
- MEP – 5 sheets – Electrical and Mechanical Site Plans, Mechanical Floor Plan
- Roofing – 6 Sheets – Roof plans and general roofing information
- Technology and Security – 36 Sheets – Technology, AV, and Security Site Plan, Floor Plans and Details

SD set is supplemented by narratives for the following disciplines:

- Structural – 2 pages
- Landscape Architecture – 6 pages
- Architecture – 1 pages
- MEP – 16 pages
- Technology/Security – 13 pages
- Geotechnical Report – Intertek PSI, May 2020, 41 pages

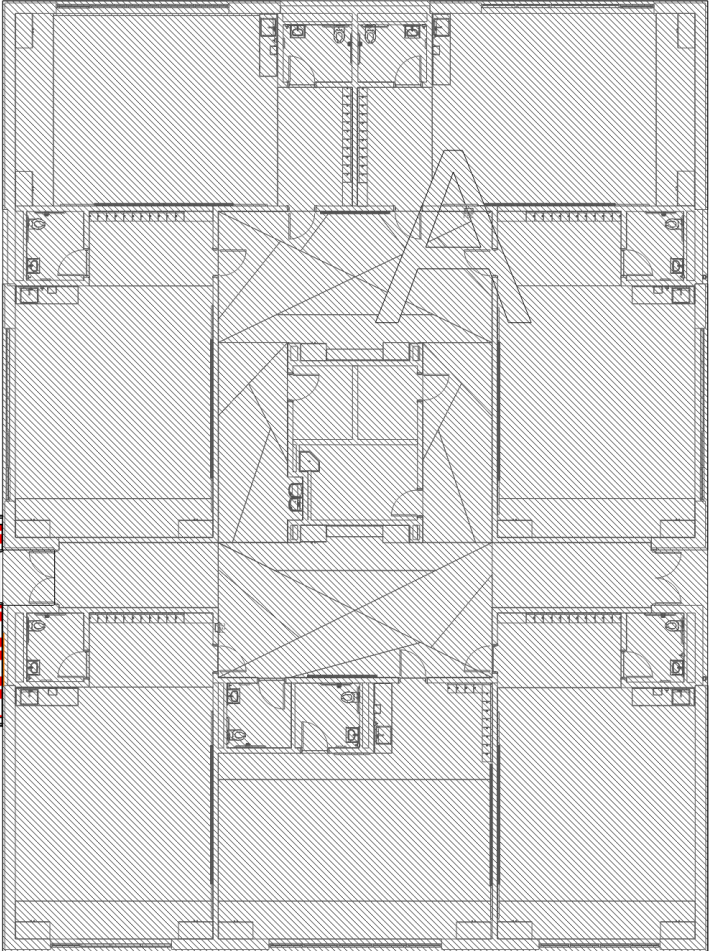
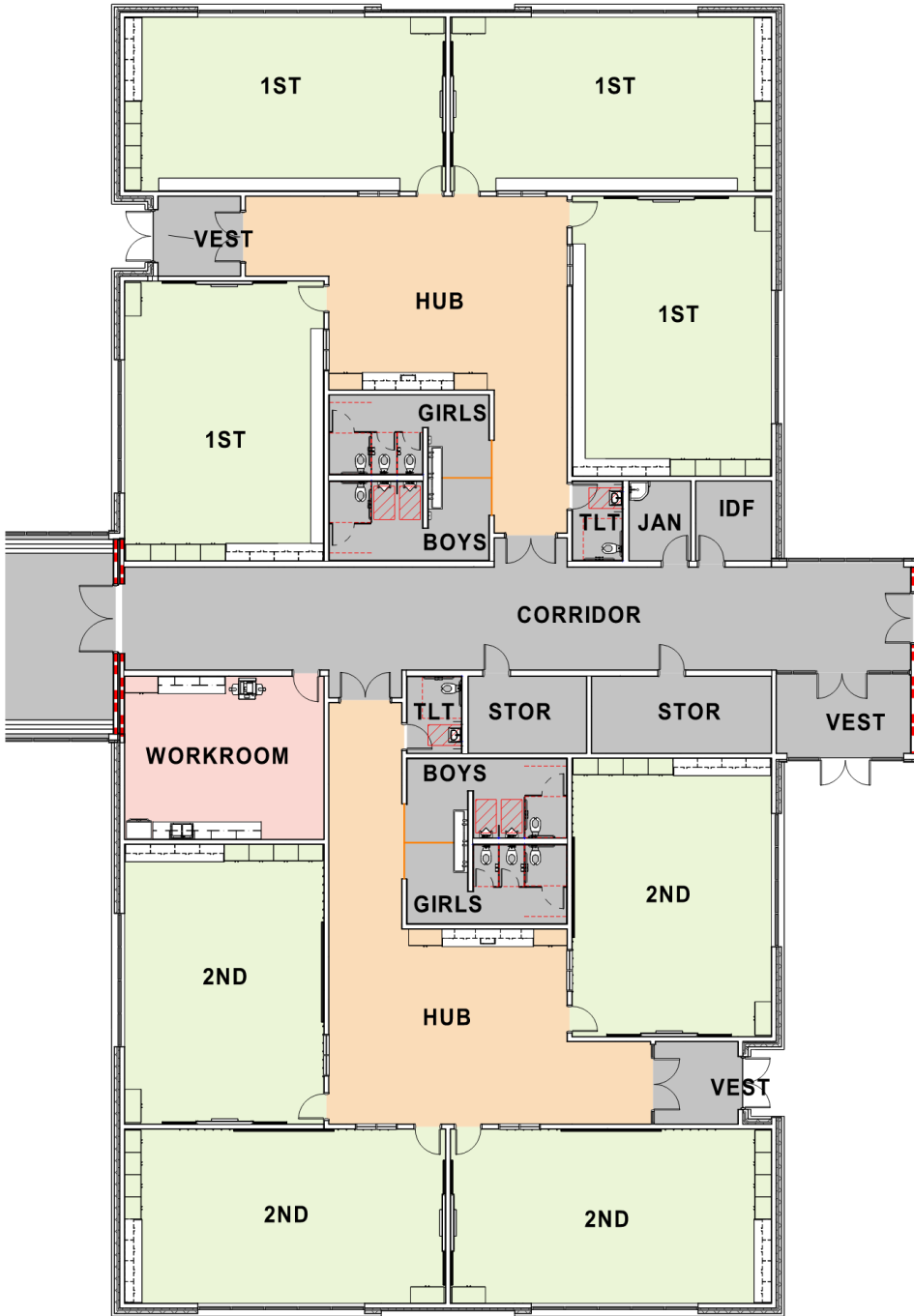
FLOOR PLAN

Overall



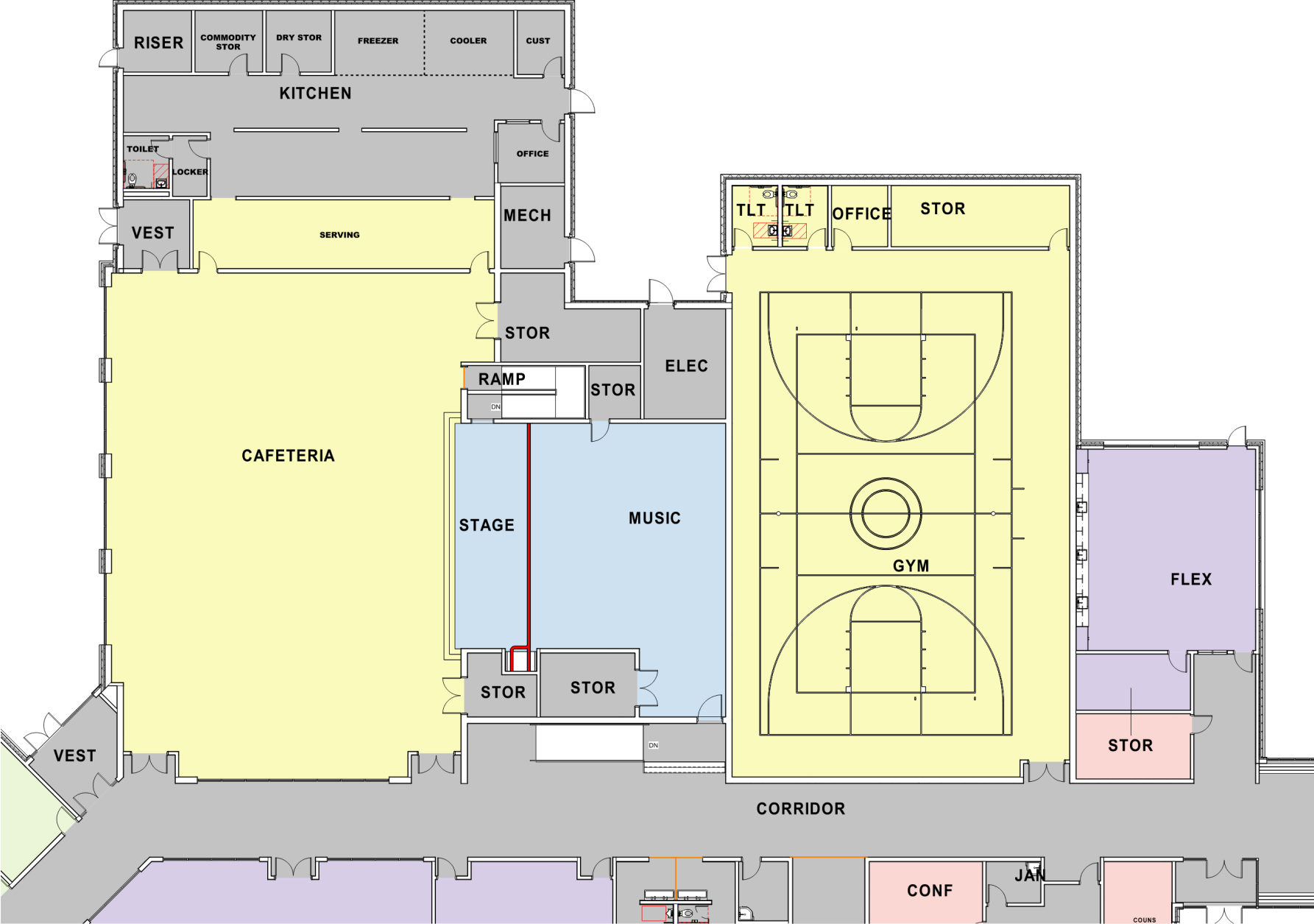
FLOOR PLAN

1st/2nd

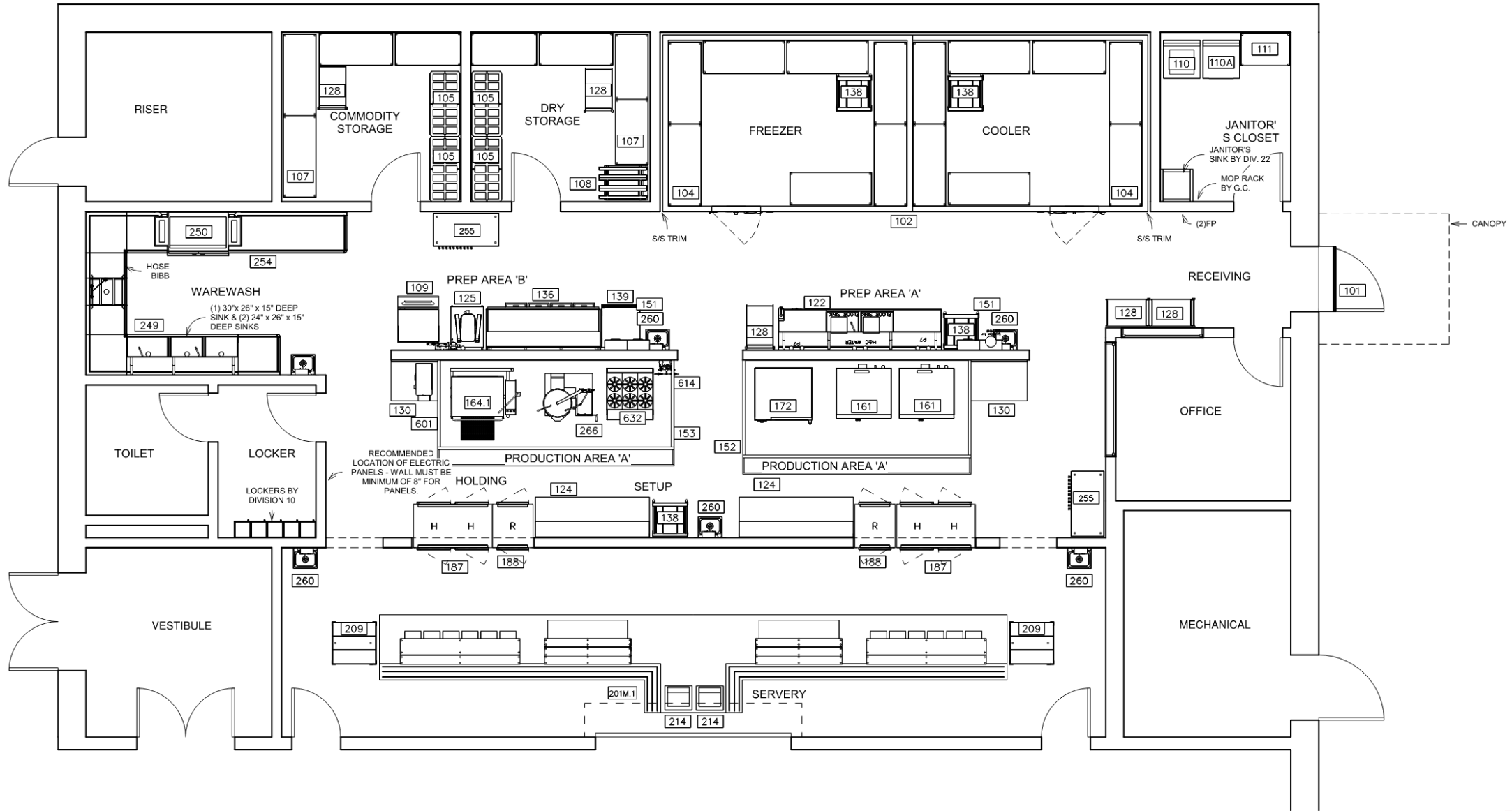


FLOOR PLAN

Core

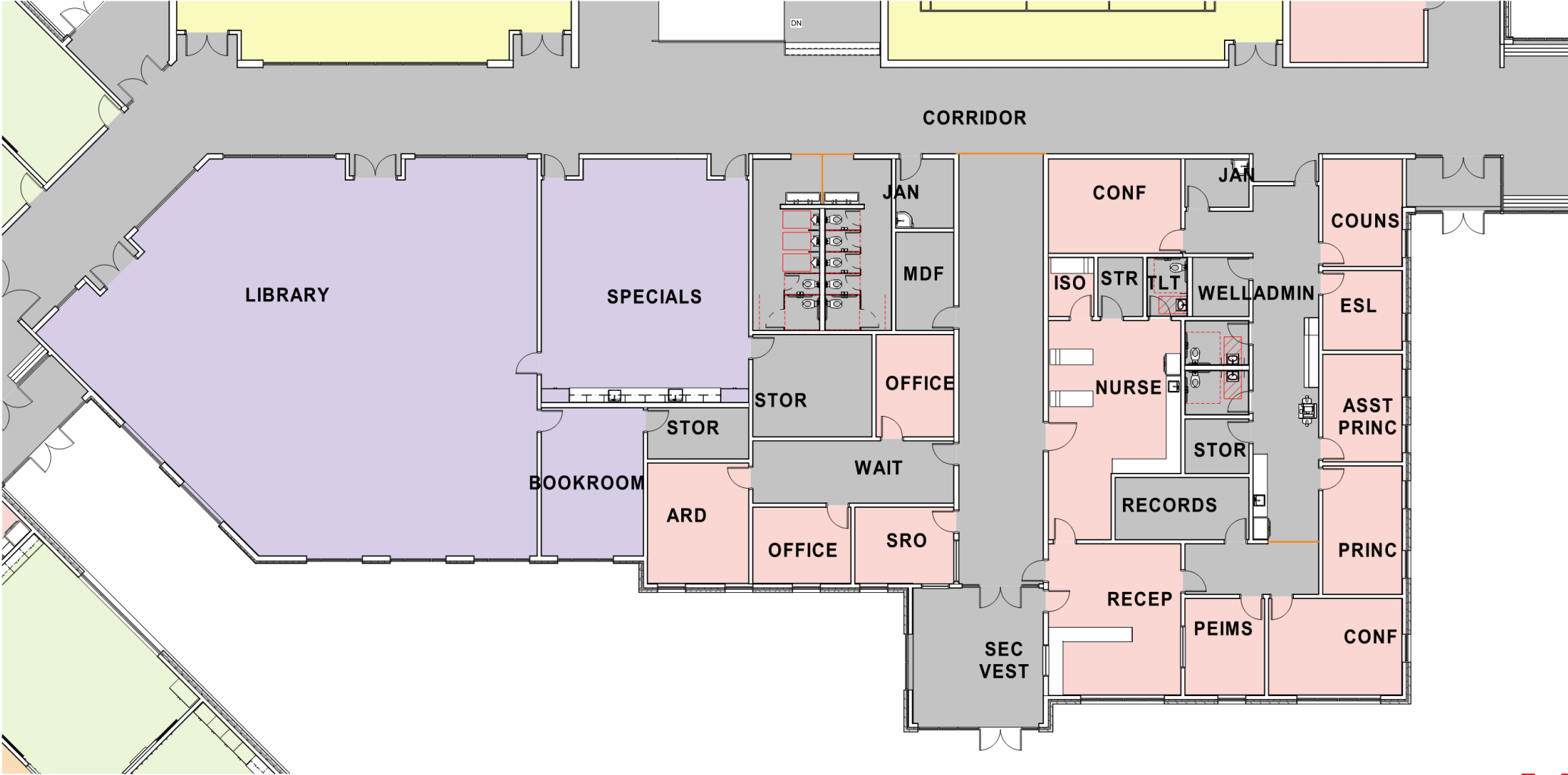


KITCHEN



FLOOR PLAN

Admin/Library

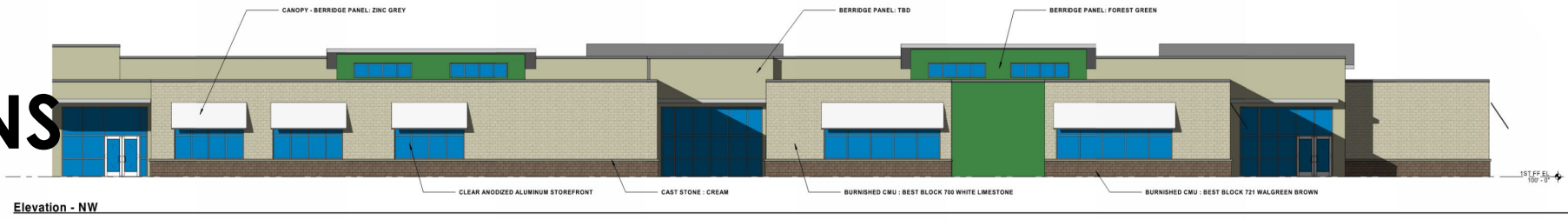


FLOOR PLAN

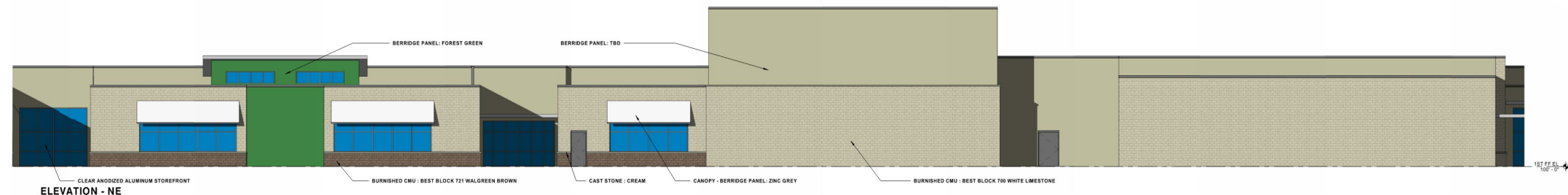
3rd/4th/5th/SPED



EXTERIOR ELEVATIONS



Elevation - NW



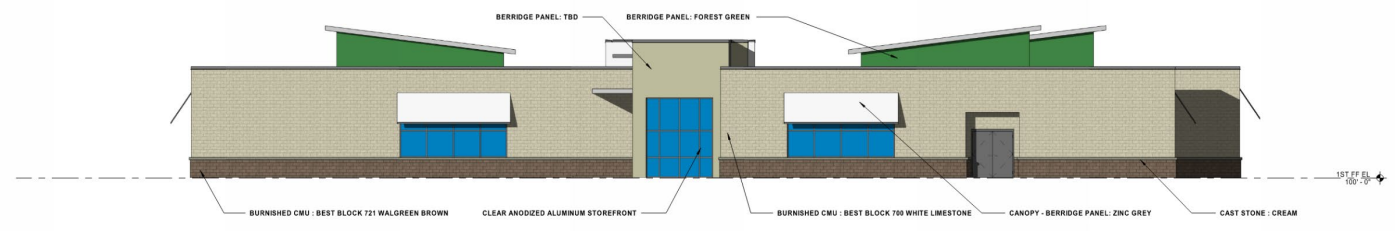
Elevation - NE



Elevation - SE

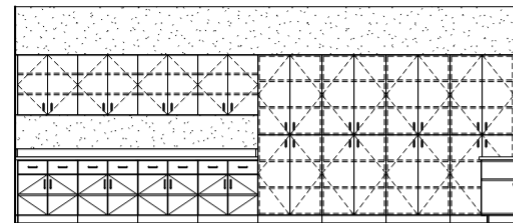
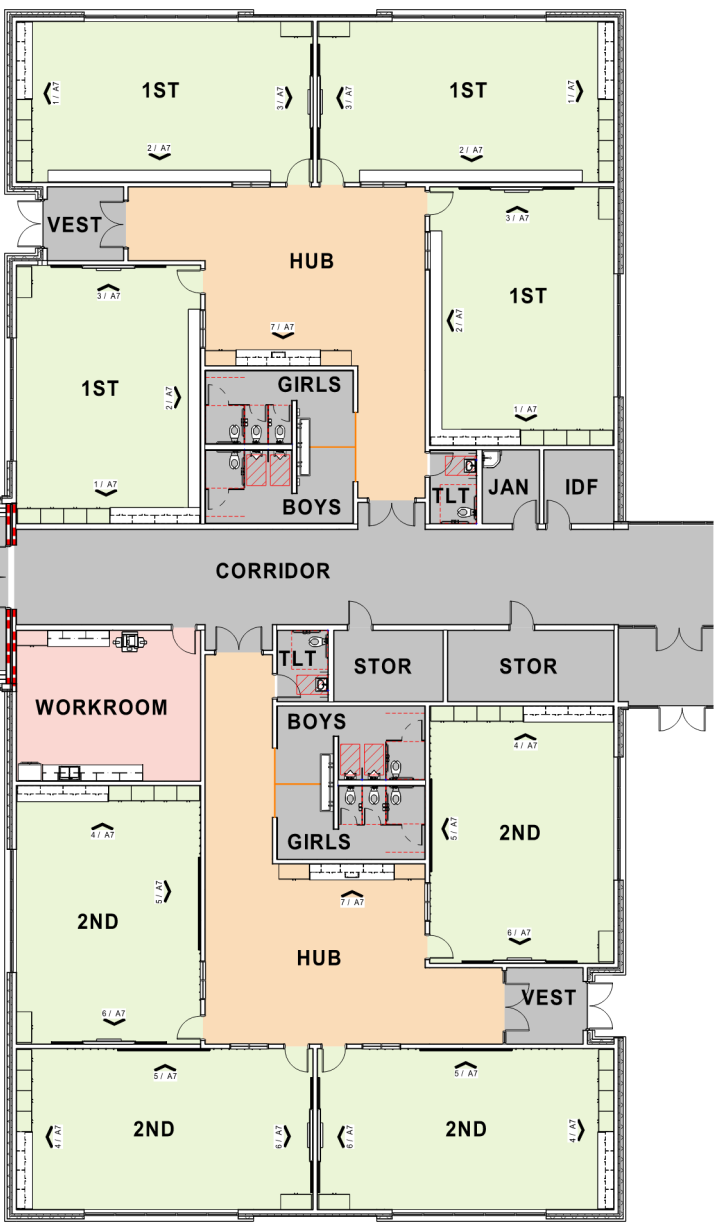


Elevation - SW

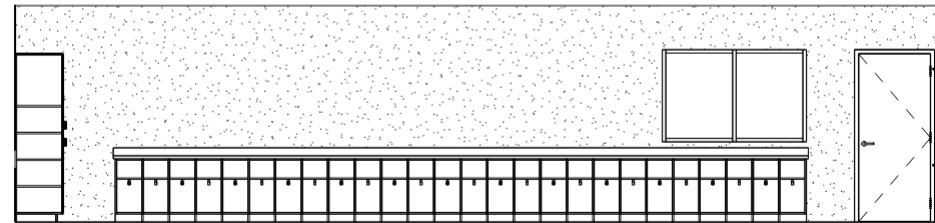


Elevation - W

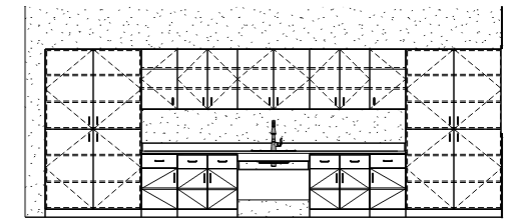
INTERIOR ELEVATIONS



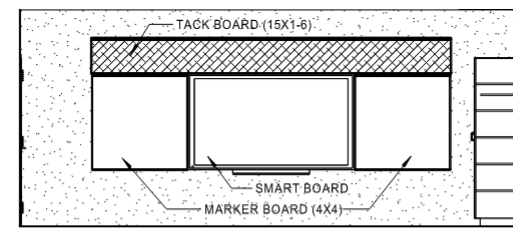
1 ELEVATION - 1ST GRADE MILLWORK
1/4" = 1'-0"



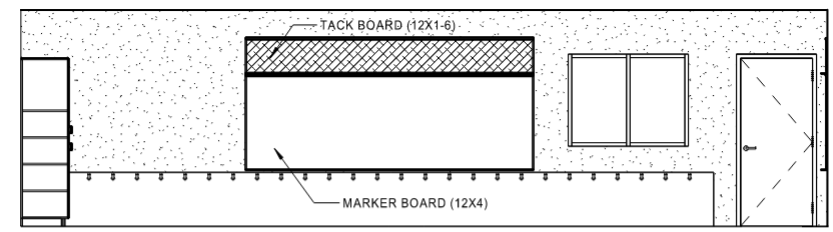
2 ELEVATION - 1ST GRADE CUBBIES
1/4" = 1'-0"



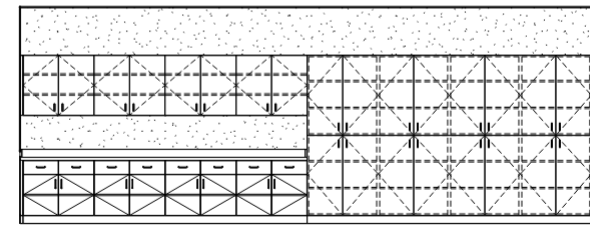
7 ELEVATION - HUB
1/4" = 1'-0"



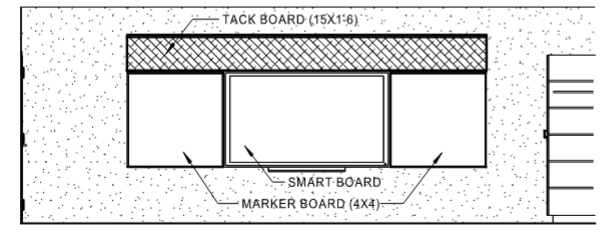
3 ELEVATION - 1ST GRADE TEACHING WALL
1/4" = 1'-0"



5 ELEVATION - 2ND-5TH GRADE COAT HOOKS
1/4" = 1'-0"



4 ELEVATION - 2ND-5TH GRADE MILLWORK
1/4" = 1'-0"



6 ELEVATION - 2ND-5TH GRADE TEACHING WALL
1/4" = 1'-0"

LANDSCAPE CONCEPTS



HOMAGE TO EXISTING ELEMENTARY SCHOOL



POUR IN PLACE RUBBER PLAYGROUND



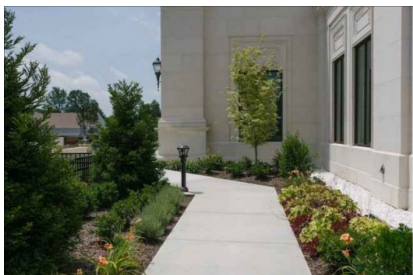
OUTDOOR CAFETERIA/ COURTYARD



POUR IN PLACE RUBBER PLAYGROUND



OUTDOOR CAFETERIA/ COURTYARD



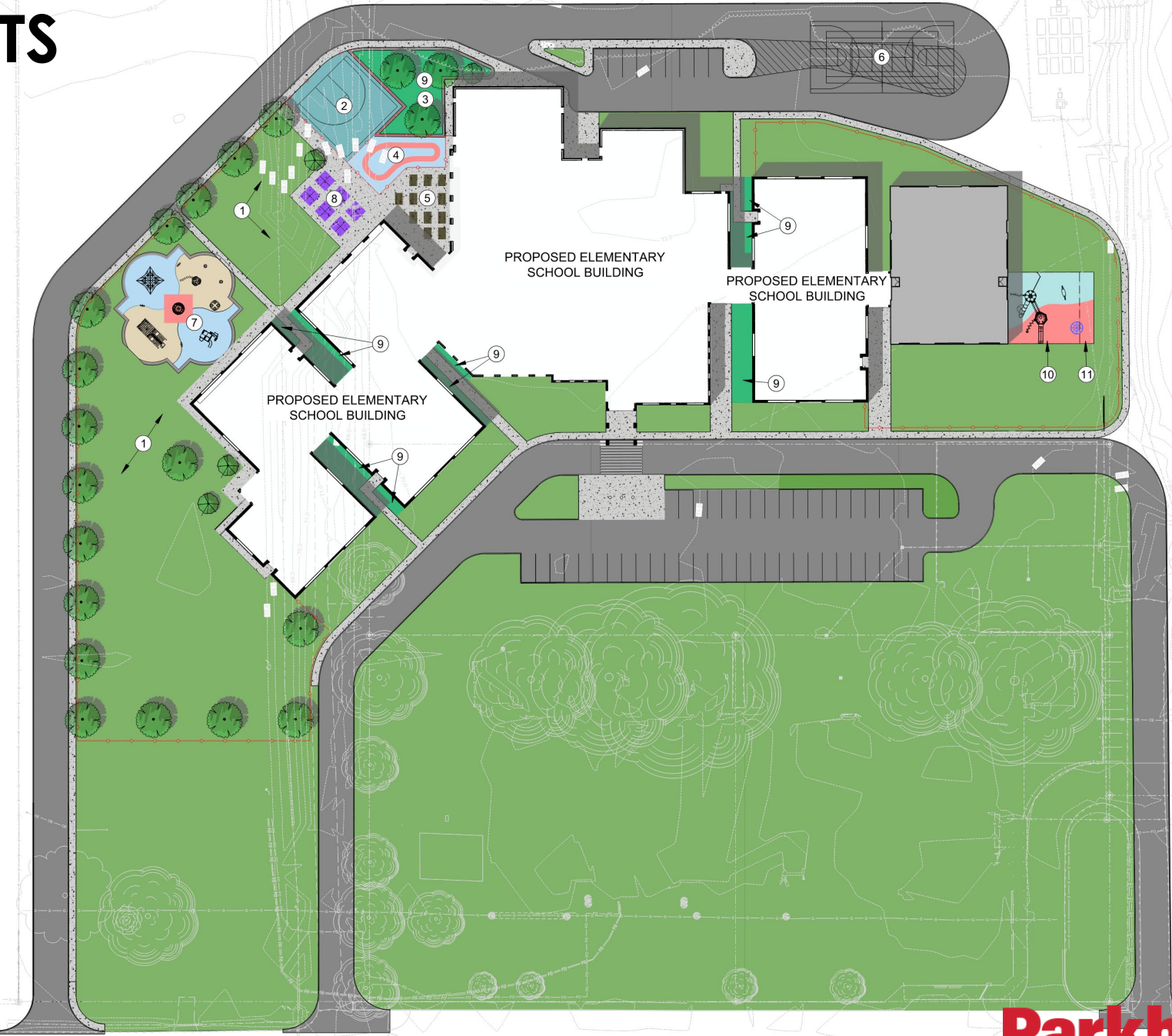
LANDSCAPE BEDS BETWEEN BUILDINGS



FOUR SQUARE



OPEN LAWN SPACE



LANDSCAPE CONCEPTS



HOMAGE TO EXISTING ELEMENTARY SCHOOL



POUR IN PLACE RUBBER PLAYGROUND



OUTDOOR CAFETERIA/ COURTYARD



POUR IN PLACE RUBBER PLAYGROUND



OUTDOOR CAFETERIA/ COURTYARD



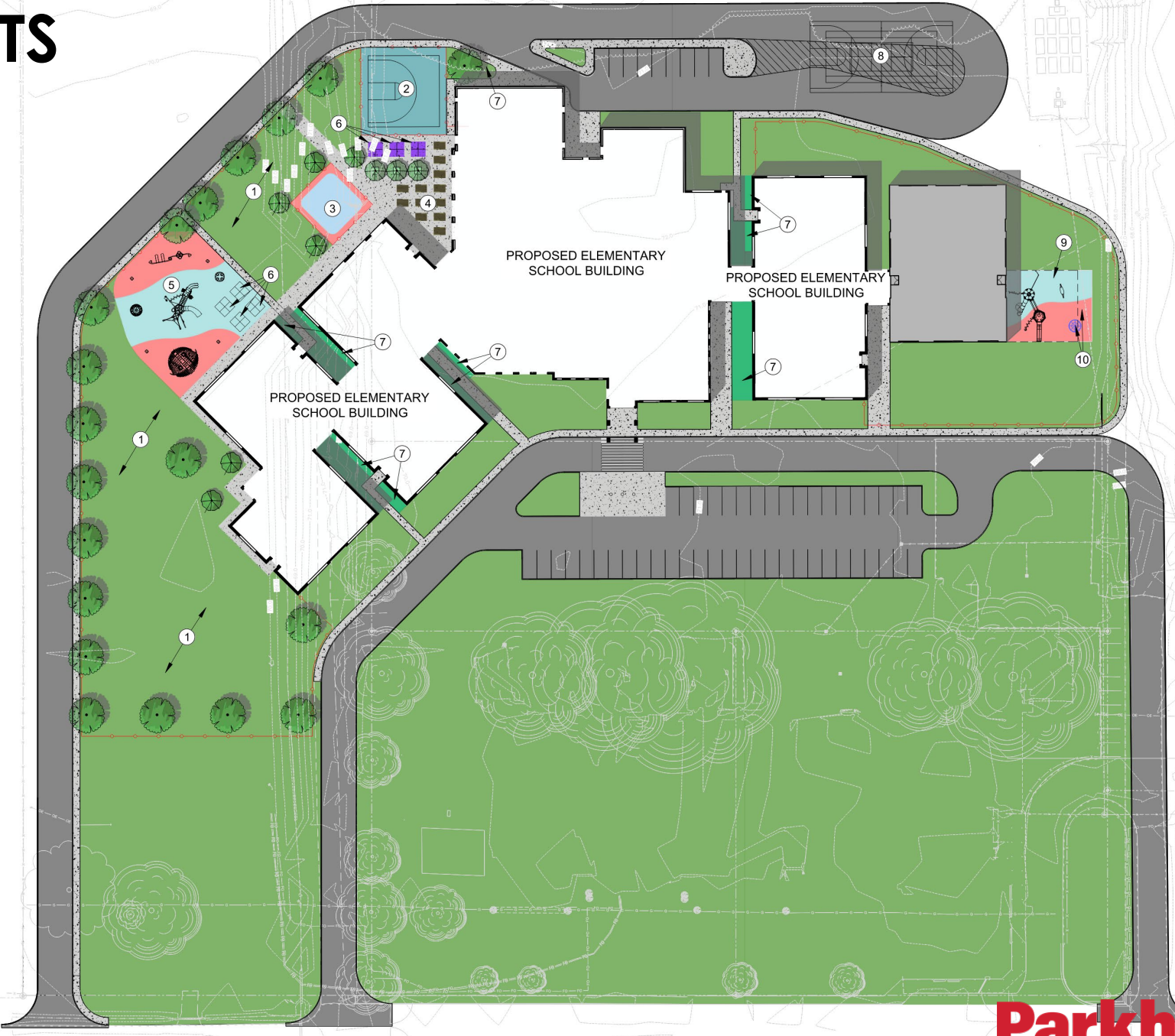
LANDSCAPE BEDS BETWEEN BUILDINGS



FOUR SQUARE



OPEN LAWN SPACE



BOARD ACTION



**REVIEW AND APPROVE
SCHEMATIC DESIGN**

PROJECT ROADMAP

